

Child Protection Policy Summary of Content - Sept 2023



Child Focused Approach to Safeguarding

- Introduction
- Policy Context
- Definition of Safeguarding
- Related Safeguarding Policies
- Policy Compliance, Monitoring and Review



Staff Engagement and Expectations

- Staff awareness, induction and training
- Safer working practice
- Supervision and support



Safer Recruitment and Allegations Against Staff

- Allegations/concerns raised in relation to staff, including supply teachers, volunteers and contractors
- Safe Culture
- Concerns that meet the 'harm threshold'
- Concerns that do not meet the 'harm threshold'



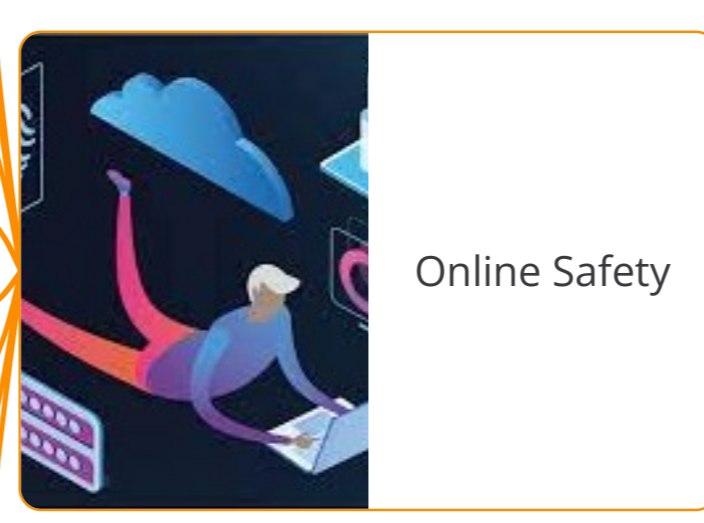
Physical Safety

- Use of 'reasonable force'
- The use of premises by other organisations
- Site security



Local Support

- Education Safeguarding Service
- LADO Service
- Integrated Children's Services/Children's Social Work Services
- Early Help
- Kent Police
- Kent Safeguarding Children Multi-Agency Partnership (KSCMP)
- Adult Safeguarding



Online Safety

- Information security and access management
- Staff training
- Policies and procedures
- Appropriate filtering and monitoring on school/college devices and networks
- Remote/Online learning
- Educating pupils
- Working with parents/carers
- The FSD Child Protection Policy includes a section on Online Safety.



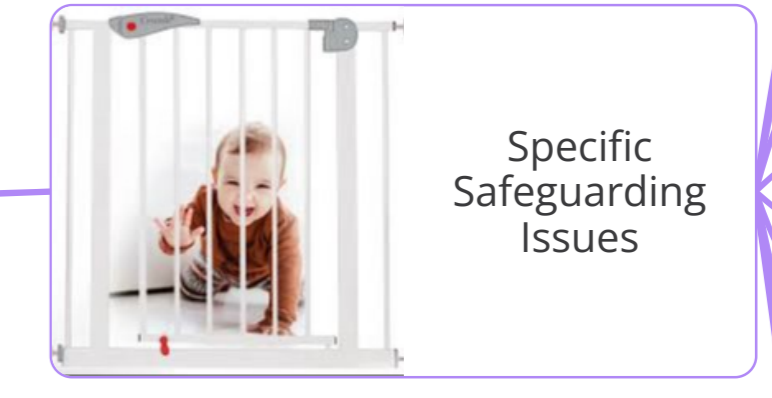
Key Responsibilities

- Governance and Leadership
- Designated Safeguarding Lead (DSL)
- Members of Staff
- Children and Young People
- Parents and Carers



Child Protection Procedures

- Recognising indicators of abuse and neglect
- Responding to child protection concerns
- Recording concerns
- Multi-agency working
- Confidentiality and information sharing
- Complaints



Specific Safeguarding Issues

- Child-on-child abuse
- Child-on-child sexual violence and sexual harassment
- Nude and/or semi-nude image sharing by children
- Child Sexual Exploitation (CSE) and Child Criminal Exploitation (CCE)
- Serious violence
- So-called Honour Based Abuse (HBA)
- Preventing radicalisation
- Cybercrime
- Domestic abuse
- Mental health



Supporting Children Potentially at Greater Risk of Harm

- Safeguarding children with Special Educational Needs or Disabilities (SEND)
- Children requiring mental health support
- Children who are absent from Education
- Elective Home Education (EHE)
- Children who need a social worker (child in need and child protection plans)
- Looked after children, previously looked after children and care leavers
- Children who are Lesbian, Gay, Bi, or Trans (LGBT)



Opportunities to Teach Safeguarding